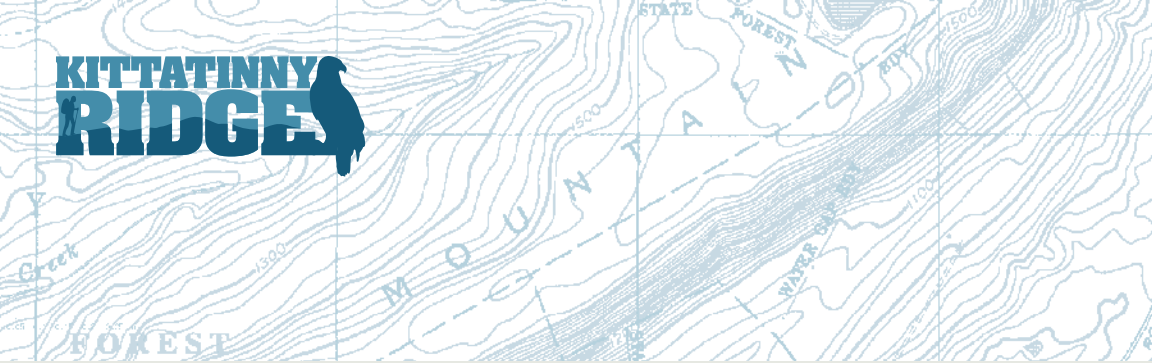



**KITTATINNY
RIDGE**



THIS LAND IS
YOUR LAND.
SO WHAT ARE YOU
WAITING FOR?





185 MILES.

360,000 ACRES.

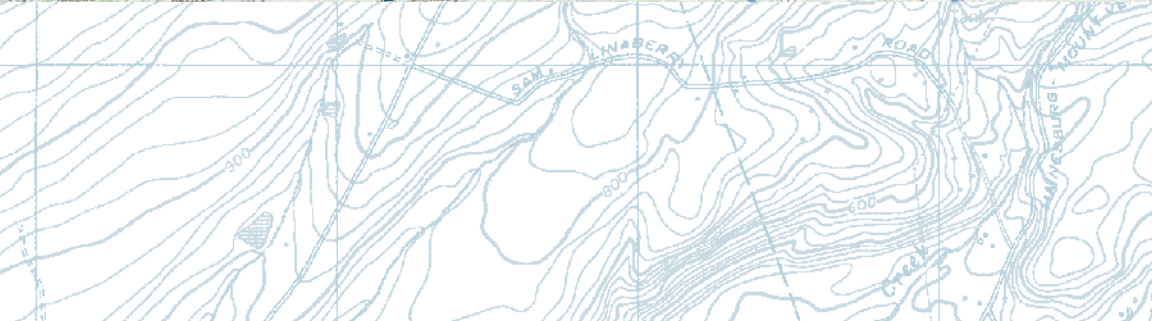
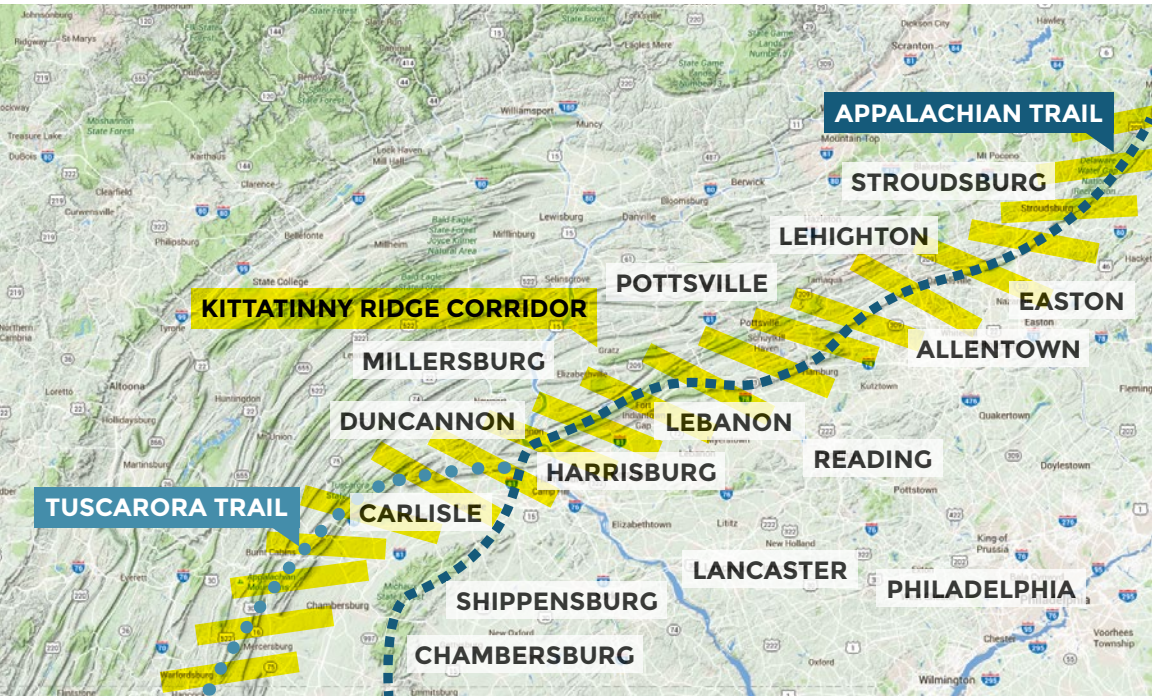
80% FOREST +
SHRUB HABITAT.

7 IMPORTANT
MAMMAL AREAS.

GLOBAL IMPORTANT
BIRD AREA.

The Lenni-Lenape named it Kittatinny—"endless mountain." Others simply call it Blue Mountain. To all, the Kittatinny Ridge is one of Pennsylvania's most treasured landscapes, stretching 185 miles from the Delaware River to the Mason-Dixon Line. The scenic backdrop to life in 12 counties, it is home to the world-famous Appalachian Trail, and visitors seek its spectacular summits to hike, birdwatch, ski, hunt, fish, bike, and pursue endless beauty.

But the Ridge is more than just recreation and adventure. It is a Global Important Bird Area, home to countless indigenous wildlife species, and a primary migration corridor. Tens of thousands of hawks, eagles, falcons, hummingbirds, and butterflies pass through each year. And its natural resources are critical to our communities, providing clean drinking water and generating significant revenue for local economies. // **Help us protect the Ridge.**





TAKE A HIKE. JOIN A CREW.
HEAR A SONG. MAKE A RARE
FIND. BUILD A COMMUNITY.





This work takes a village. Join ours.

Today, the Kittatinny Ridge and Appalachian Trail face formidable threats:

- // **Development** - Almost every part of the Ridge is vulnerable to future residential and commercial expansion.
- // **Energy production and transmission** - High-voltage towers disturb large tracts of forest, threatening wildlife habitats and decreasing water quality.
- // **Pollution** - Illegal dumpsites are an ongoing problem in remote areas of the Ridge Corridor.
- // **Invasive plant species** - Non-native plants are damaging trees and overtaking indigenous flora.
- // **Climate Change** - The impacts of globally increasing greenhouse gases are an ongoing threat to the species, habitats, and communities along the Ridge.

The Kittatinny Coalition is an alliance of organizations, agencies, and academic institutions working with municipal officials and private landowners to conserve the natural, scenic, cultural, and aesthetic resources of the Kittatinny Ridge and Corridor. Coalition partners are using their collective expertise and resources to:

- // **Conserve land** to permanently protect over 100,000 acres.
- // **Conserve native habitat and wildlife** to support species diversity.
- // **Share conservation research** to facilitate the exchange of information.
- // **Provide clean and plentiful water** by permanently protecting water resources.
- // **Protect landscapes** along the Ridge through municipal action.
- // **Connect citizens** through environmental activism and stewardship.

The Ridge is our gift. Let's give back.

This vast, beautiful resource and globally important migration highway needs us. Your donations to the Kittatinny Ridge Fund are used to conserve the lands and waterways of the Kittatinny Ridge and Corridor, and to help provide a scenic corridor for the Appalachian Trail. Visit kittatinnyridge.org/donate to lend your support and make a donation today.

Every adventure ends with a good story. What's yours?

Everyone who visits the Kittatinny Ridge comes away with a different experience. We want to hear yours. Go to kittatinnyridge.org/share-your-story and tell us your tale, or share your favorite photos or videos.



Photo: Bill Moses



pennsylvania
DEPARTMENT OF CONSERVATION
AND NATURAL RESOURCES



Audubon PENNSYLVANIA



APPALACHIAN TRAIL
CONSERVANCY®

Funding assistance has been provided by the Department of Conservation and Natural Resources, Bureau of Recreation and Conservation, Environmental Stewardship Fund.

1201 PAWLINGS ROAD, AUDUBON, PA 19403 | KITTATINNYRIDGE.ORG