



Photo: Pammi Simone

# 2015

// RETURN ON ENVIRONMENT  
FACT SHEET

## Cumberland County

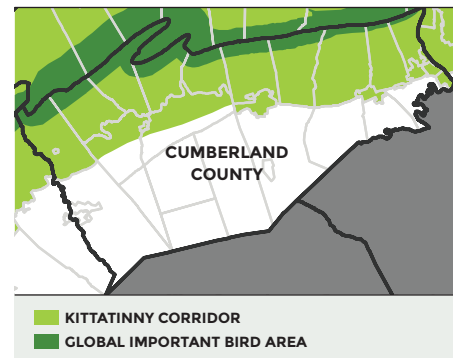
### Nature is serious business.

**WHAT IS THE VALUE OF OUR CLEAN AIR, WATER, AND OPEN SPACE? WHAT HAPPENS TO OUR QUALITY OF LIFE IF WE CONTINUE TO LOSE FORESTS, STREAMS, AND WETLANDS?**

More than just pretty places, Cumberland County's open spaces are productive assets that generate significant economic value. Its trees, stream valleys, farms, and forests account for hundreds of millions of dollars each year in savings and avoided costs. Open spaces positively affect everything from tourism and property value to public health and stormwater management; increase revenues from recreation; and naturally improve air and water quality.

#### CUMBERLAND COUNTY'S NATURAL RESOURCES INCLUDE:

- // Global Important Bird Area along the Kittatinny Ridge
- // 2 state forests: Michaux State Forest, Tuscarora State Forest
- // 3 state parks: Kings Gap Environmental Education Center, Colonel Denning State Park, Pine Grove Furnace State Park
- // 4 state game lands
- // 140+ municipal parks
- // 3,584 acres of federal park lands
- // 220+ miles of trails
- // 2 Pennsylvania Scenic Rivers, 3 official water trails
- // 45 miles of the Appalachian National Scenic Trail (A.T.)



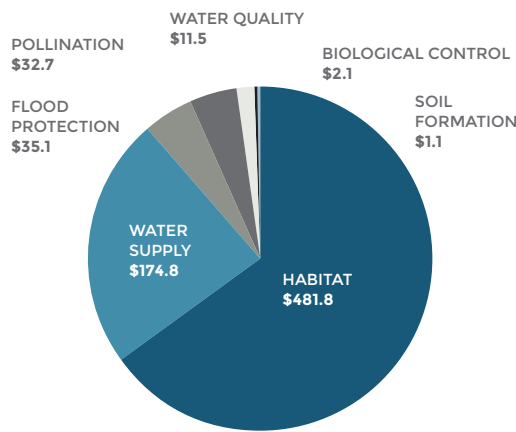
CUMBERLAND COUNTY HAS APPROXIMATELY **55,000** ACRES (15%) OF PROTECTED PARKS AND NATURAL AREAS

## Our natural assets are essential to our everyday life.

CUMBERLAND COUNTY'S OPEN SPACES PROVIDE NATURAL SYSTEM SERVICES AND RECREATIONAL AND PROPERTY-VALUE BENEFITS THAT EXCEED AN ESTIMATED **\$1 BILLION** ANNUALLY

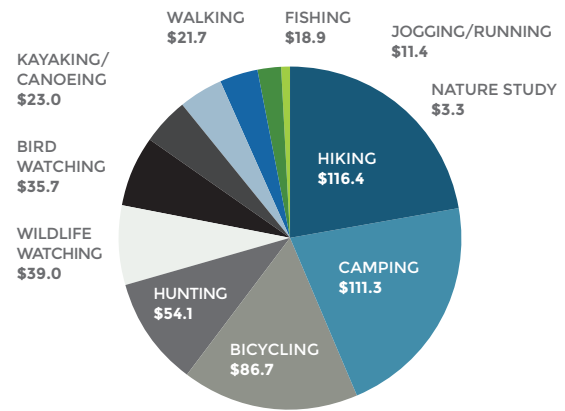
### \$739.1\* MILLION IN ANNUAL SAVINGS NATURAL SYSTEM SERVICES

\* Maximum Economic Value; the estimated range is \$61.9-\$739.1 million, with a mean of \$269.6 million. Source: Costanza et al (2006)



### \$521.5\* MILLION IN ANNUAL REVENUE OUTDOOR RECREATION

\* Maximum Economic Value; the Minimum Economic Value is estimated at \$204.7 million. Based on the PA Department of Conservation and Natural Resources 2014 Outdoor Recreation Participation Survey. Source: IMPlan Model (2015)



### \$53.3\* MILLION IN ANNUAL AVOIDED COSTS AIR POLLUTION REMOVAL BY TREES

\* Maximum Economic Value; the Minimum Economic Value is estimated at \$14.0 million.

### \$93.4\* MILLION IN ANNUAL AVOIDED COSTS CARBON STORAGE AND SEQUESTRATION

\* Maximum Economic Value; the Minimum Economic Value is estimated at \$91.9 million.

### \$38.9 MILLION IN ANNUAL REVENUE OUTDOOR RECREATION STATE + LOCAL TAXES

### 6,656 ANNUAL JOBS CREATED OUTDOOR RECREATION BENEFIT

#### WHAT CAN WE DO?

Expanding natural system services and creating a connected pattern of open space is the best way to maximize nature's ecological and financial value and maintain sustainable long-term services. Municipal officials, policymakers, business leaders, and local citizens need to join together to examine current policies and ensure sustainable environmental practices. Only then can we build a foundation for a vibrant, balanced economy and a healthy, desirable community for current residents and future generations. For more information on how to protect Cumberland County and the Kittatinny Ridge, visit [kittatinnyridge.org](http://kittatinnyridge.org). To download the full Cumberland County Return on Environment report, go to [kittatinnyridge.org/explore/research-education](http://kittatinnyridge.org/explore/research-education).

PLEASE HELP US PROTECT THE RIDGE // VISIT [KITTATINNYRIDGE.ORG](http://KITTATINNYRIDGE.ORG) TODAY