



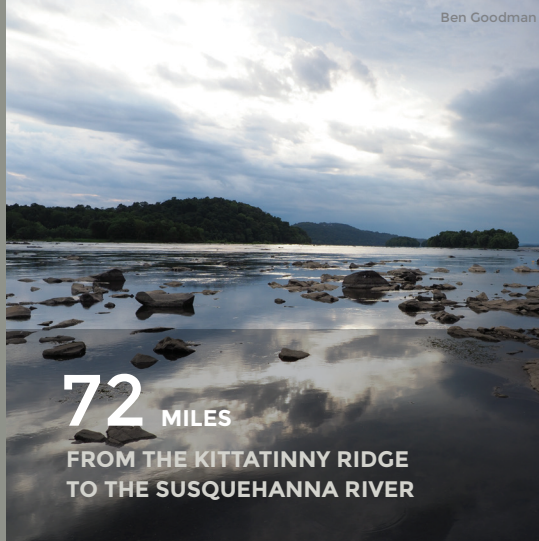
MANADA  
CONSERVANCY

JOIN THE SWATARA STEWARDSHIP PROGRAM //  
**MANADA.ORG**

// KITTATINNY RIDGE  
CONSERVATION  
LANDSCAPE (KRCL)

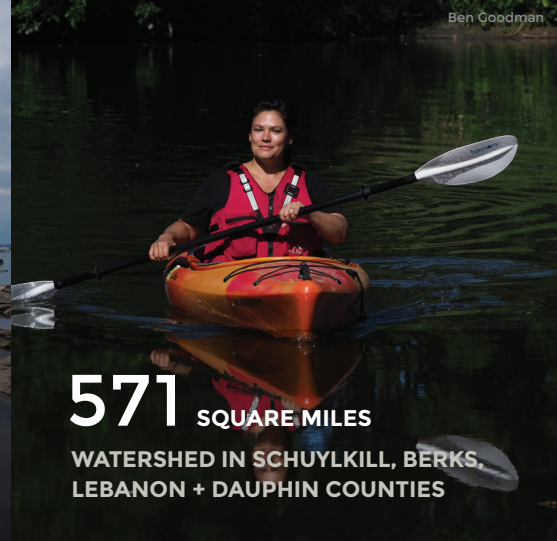
# Swatara Creek

A GREEN RIBBON LANDSCAPE



Ben Goodman

**72** MILES  
FROM THE KITTATINNY RIDGE  
TO THE SUSQUEHANNA RIVER



Ben Goodman

**571** SQUARE MILES  
WATERSHED IN SCHUYLKILL, BERKS,  
LEBANON + DAUPHIN COUNTIES



Rich Zaino

## PROTECTING THE SWATARA CREEK

## PROTECTS OUR FUTURE.

Known by locals as the “Swattie,” the Swatara Creek flows from the Kittatinny Ridge for 72 miles before joining the Susquehanna River and eventually emptying into the Chesapeake Bay. A designated Water Trail and popular recreation area for swimming, boating, and fishing, the Swatara Creek watershed drains from four counties and supports a number of vulnerable native plant and animal species, including the Great Egret, bald eagles, herons, freshwater mussels, eels, and beavers.



Suzanne Donovan

**\$106** MILLION  
ANNUAL NATURAL SYSTEM  
SERVICES VALUE



Rich Zaino

**\$27** MILLION  
ANNUAL SAVINGS DUE TO  
HEALTHY RIPARIAN AREAS



Rich Zaino

**\$71** MILLION  
ANNUAL GREEN RIBBON LANDSCAPE  
RETURN ON ENVIRONMENT



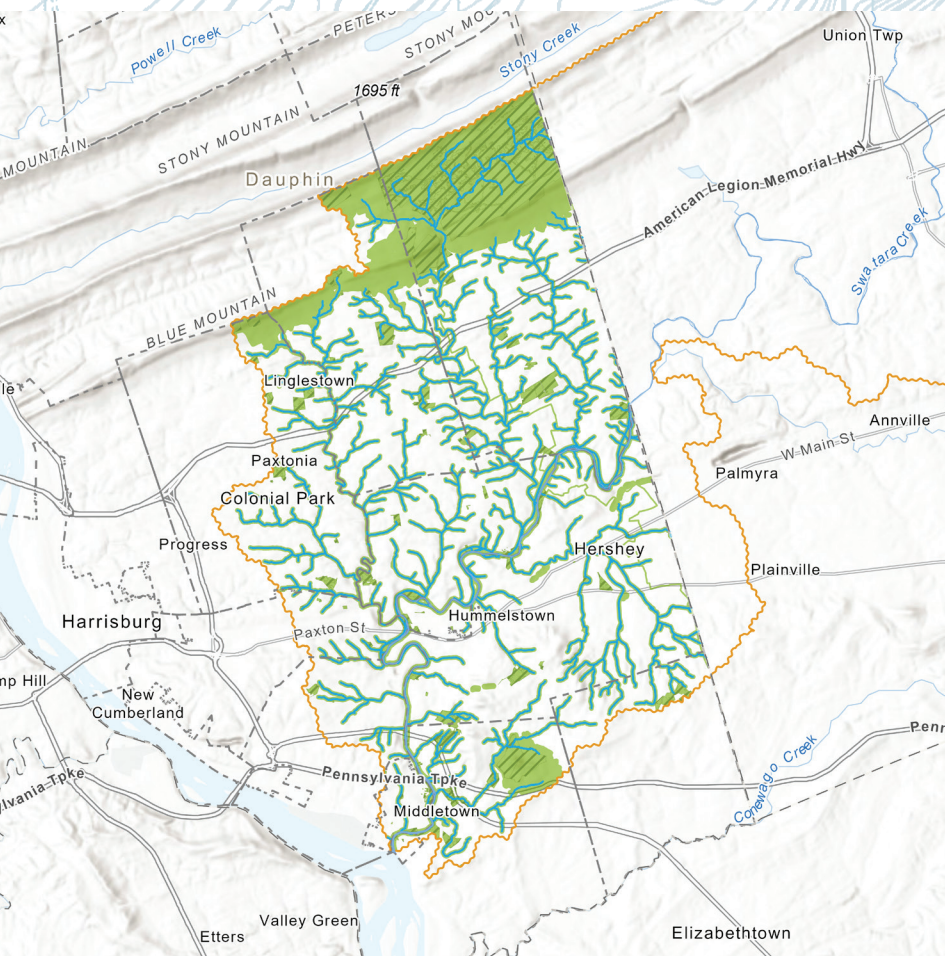
Funding for this project was provided by the William Penn Foundation through the Delaware River Watershed Initiative, and a grant from the Community Conservation Partnerships Program, Environmental Stewardship Fund, under the administration of the Pennsylvania Department of Conservation and Natural Resources, Bureau of Recreation and Conservation.



MANADA  
CONSERVANCY

JOIN THE SWATARA STEWARDSHIP PROGRAM //

**MANADA.ORG**



## INCREASING OUR RETURN ON ENVIRONMENT

**Green Ribbon Landscapes** – areas where large, native forests, stream sides, and grassland habitats connect with trails, parks and green, open space – provide the highest environmental health, biological diversity, and economic sustainability.

- **GREEN RIBBON LANDSCAPE**
- **WATERWAYS**
- **SWATARA CREEK WATERSHED BOUNDARY**

**MANADA CONSERVANCY IS DEDICATED  
TO PROTECTING THE NATURAL  
RESOURCES OF DAUPHIN COUNTY AND  
THE SWATARA CREEK TO FULFILL OUR  
VISION OF A COMMUNITY IN WHICH  
PRESERVED LAND IS ABUNDANT AND  
CONSERVATION IS WIDELY PRACTICED  
FOR THE BENEFIT OF ALL.**

### **GO NATIVE**

**Native plant species ensure ecological sustainability, diminish pests, and support local wildlife.**

- // Remove invasive plant species, and replace lawns with native flowers, shrubs, and trees.
- // Reduce or eliminate the use of fertilizers, pesticides, herbicides, and other chemicals.
- // Clean up litter and trash that you find in and along the creek.

### **GROW TOGETHER**

**Riparian buffers protect water sources, prevent erosion, and provide habitat, plus:**

- // Help to reduce flooding by absorbing and slowing the flow of stormwater.
- // Absorb sediment and nutrients that would otherwise enter the creek and watershed.
- // Help to recharge and replace the supply of fresh groundwater.

### **GET INVOLVED**

**Awareness, inspiration, and action will lead to better policies for environmental protection.**

- // Join the Manada Conservancy's Swatara Stewardship Program and take the pledge.
- // Find resources to choose native trees and plants for your property.
- // Visit [manada.org](https://manada.org) to volunteer and become a member of the Manada Conservancy today!